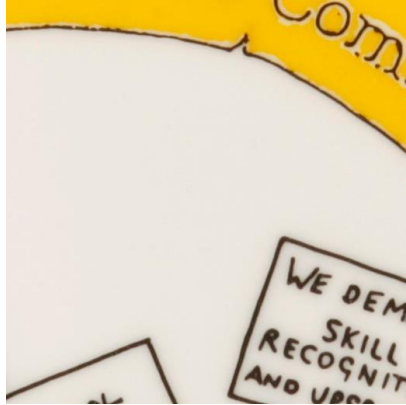




Guess the object!

2

Our camera has broken and can only take close up photos of objects. Now we can't identify what the objects are! Can you help us to work out what these photos are showing? They are all objects that are on display within the museum.



Clue: I was made to remember a famous fight for female equality



Clue: The nuns at Barking Abbey used me to decorate their clothing



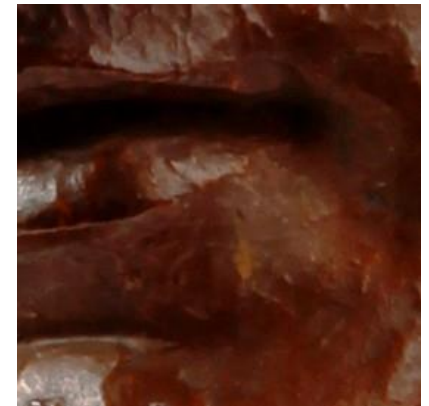
Clue: I was used on a ship to saves somebody's life



Clue: Actors wore me for a special event in 1931



Clue: I was used to keep babies safe during WWII



Clue: I was made to look like a famous runner